

Scorebuilders - PTAEXAM: The Complete Study Guide Companion CD

System Requirements and Installation Instructions

System Requirements:

Windows

- Intel® Pentium® III processor (Pentium 4 recommended)
- Microsoft® Windows® XP Home, Professional, or Tablet PC Edition with Service Pack 2 or 3, Windows Server® 2003, Windows Vista® Home Premium, Business, Ultimate, or Enterprise (including 64-bit editions) with Service Pack 1, or Windows 7
- 512MB of RAM (1GB recommended)

Macintosh

- Intel Core™ Duo or faster processor
- Mac OS X v10.4 (Tiger), v10.5 (Leopard), or v10.6 (Snow Leopard)
- 512MB of RAM (1GB recommended)

This application is optimized for higher resolution displays. A minimum of a 1280 x 1024 resolution is recommended.

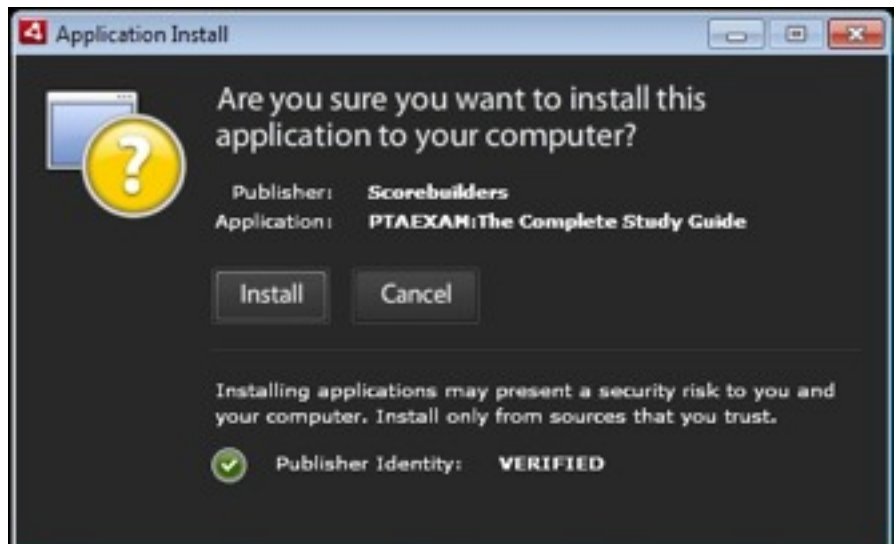
Installation Instructions Companion CD:

Microsoft Windows 7 and Vista



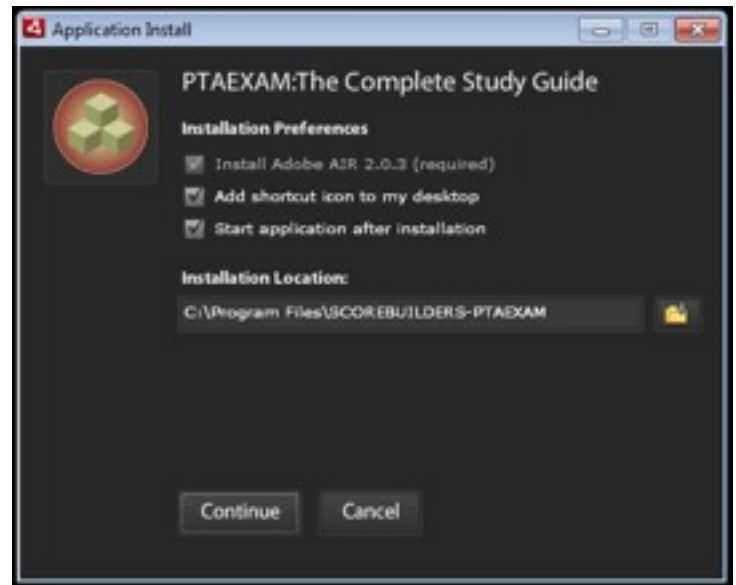
1. Insert the Scorebuilders - The Complete Study Guide (PTA) CD into your computer's CD drive. When the AutoPlay dialog box appears, select the "Run Scorebuilders_Windows_Installer.exe" option.

2. You will be prompted to ensure that you wish to proceed with the installation. Proceed by selecting the Install button.

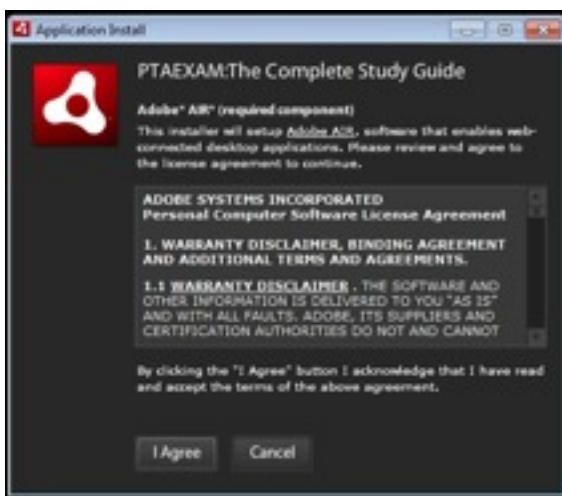


3. You will be prompted to configure advanced installation preferences. No interaction is required to proceed with the default settings. Select the Continue button and proceed to step 4.

- I. If you do not have Adobe Air version 2.0.3 installed on your computer, you will be required to install it at this time. The prerequisite installation files for Adobe Air 2.0.3 are included on this CD and will be installed by default as part of this installation.
- II. The second option allows you to enable/disable the addition of a shortcut icon on the desktop. The desktop icon is created by default.
- III. The third option enables you to launch the application upon completion of the installation. By default, the application will start once the installation has been completed.



- IV. The final option enables you to select a custom installation location on your hard drive.
- V. Once you have completed your advanced installation configuration settings, select the Continue button.



4. Next you will be prompted to review the Adobe Air license agreement. Upon completing this review, indicate your acceptance by selecting the I Agree button and proceed with the installation.



5. Windows 7 and Vista will now prompt you to ensure your approval of Adobe Air being installed on this computer. Select the Install button to proceed.

The application is now installed on this computer.

6. If you selected the default option to start the application after installation, you will see the following screen.

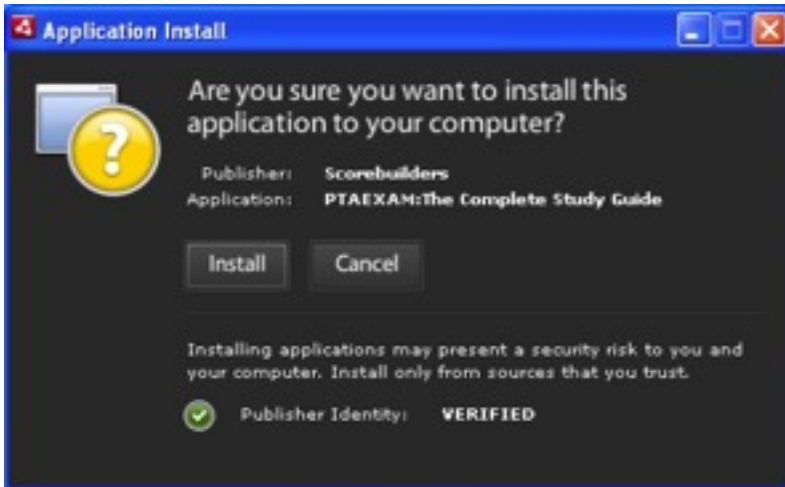
INSTALLATION COMPLETE



Installation Instructions Companion CD:

Microsoft Windows XP

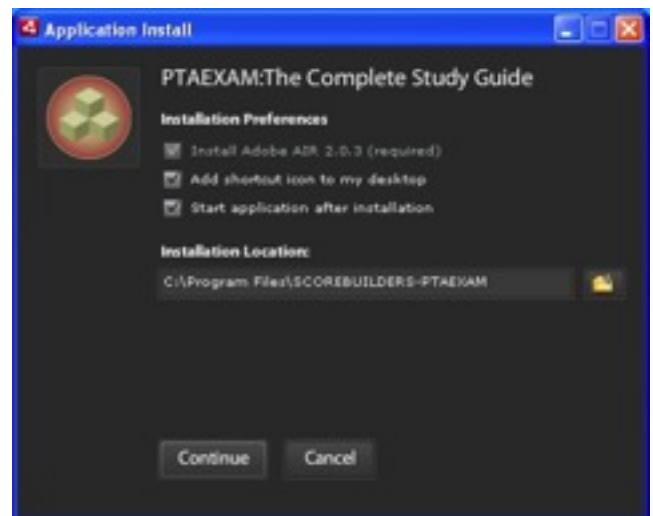
1. Insert the Scorebuilders - The Complete Study Guide (PTA) CD into your computer's CD drive. When the AutoPlay dialog box appears, it will momentarily prepare for installation.



2. You will be prompted to ensure that you wish to proceed with the installation.

3. You will be prompted to configure advanced installation preferences. No interaction is required to proceed with the default settings. Select the Continue button and proceed to step 4.

- I. If you do not have Adobe Air version 2.0.3 installed on your computer, you will be required to install it at this time. The prerequisite installation files for Adobe Air 2.0.3 are included on this CD and will be installed by default as part of this installation.
- II. The second option allows you to enable/disable the addition of a shortcut icon on the desktop. The desktop icon is created by default.
- III. The third option enables you to launch the application upon completion of the installation. By default, the application will start once the installation has been completed.



- IV. The final option enables you to select a custom installation location on your hard drive.

- V. Once you have completed your advanced installation configuration settings, select the Continue button.



4. Next you will be prompted to review the Adobe Air license agreement. Upon completing this review, indicate your acceptance by selecting the I Agree button and proceed with the installation.

5. If you selected the default option to start the application after installation, you will see the following screen.

INSTALLATION COMPLETE



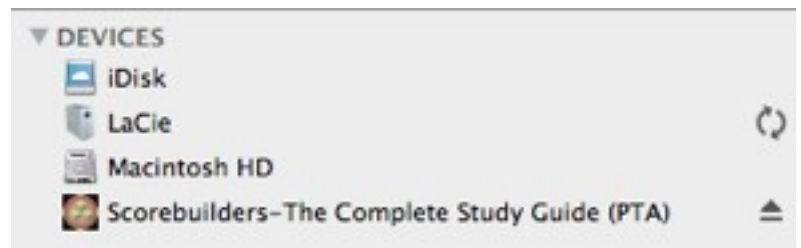
Installation Instructions Companion CD:

Macintosh OSX v10.4 and higher

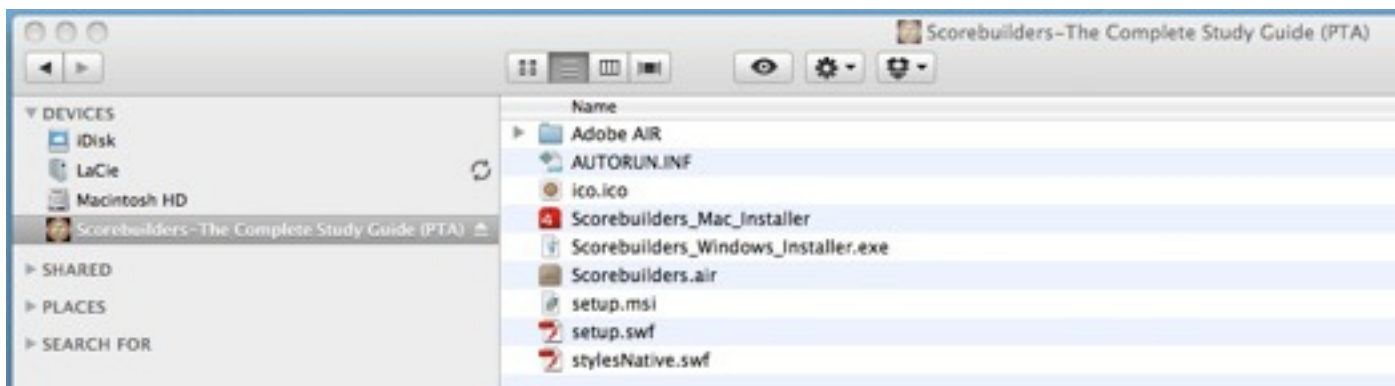
1. Insert the Scorebuilders - The Complete Study Guide (PTA) CD into your computer's CD drive. Navigate to the contents of the CD drive by either selecting the desktop icon or opening a Finder window and selecting Scorebuilders - The Complete Study Guide (PTA) from the list of mounted devices.



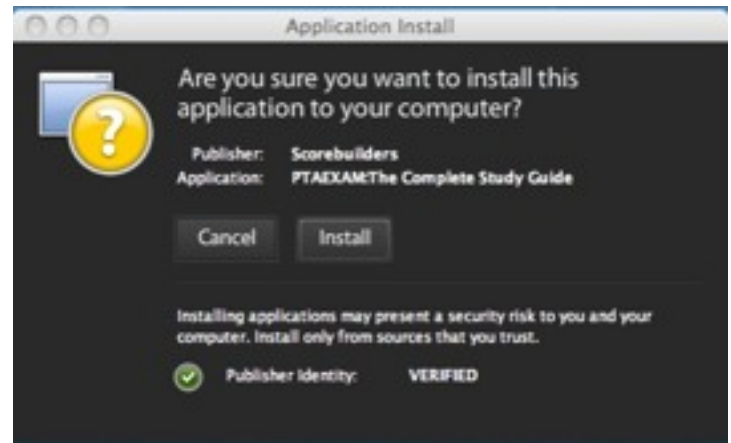
- OR -



2. Initiate installation by selecting the **Scorebuilders_Mac_Installer** via double click.

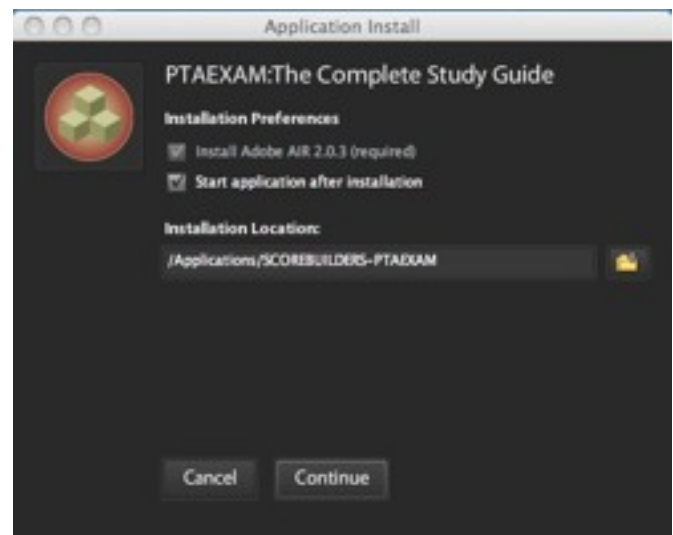


3. You will be prompted to ensure that you wish to proceed with the installation. Proceed by selecting the Install button.

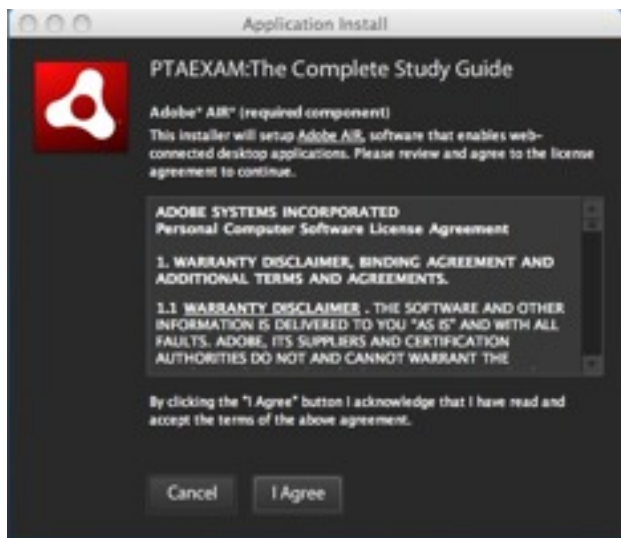


4. You will be prompted to configure advanced installation preferences. No interaction is required to proceed with the default settings. Select the Continue button and proceed to step 5.
 - I. If you do not have Adobe Air version 2.0.3 installed on your computer, you will be required to install it at this time. The prerequisite installation files for Adobe Air 2.0.3 are included on this and will be installed by default as part of this installation.

- II. The second option enables you to launch the application upon completion of the installation. By default, the application will start once the installation has been completed.
- III. The final option enables you to select a custom installation location on your hard drive.
- IV. Once you have completed your advanced installation configuration settings, select the Continue button.



5. Next you will be prompted to review the Adobe Air license agreement. Upon completing this review, indicate your acceptance by selecting the I Agree button and proceed with the installation.



6. OSX will now require you to authenticate with your account Name and Password. Upon successful authentication, installation will commence.

7. If you selected the default option to start the application after installation, you will see the following screen.

INSTALLATION COMPLETE



8. To locate this application post-installation, navigate to your Applications folder, select the SCOREBUILDERS-PTAEXAM folder and double-click the Scorebuilders-PTAEXAM.air.app.

QUICK TIP - Once the application is running you may opt to keep it in your dock by clicking and holding down the mouse button on the Scorebuilders logo. An additional options menu will appear. Select Options, Keep in Dock for quick dock access to this application.